

CoSTER-100

Date: 29/06/2010 Time: 10:02:05 AM

Sterilization Validation Software
Pharma-LOG 100

Data Report with Channel & Time Average Report

Customer Name	Operator ID	01234567	Total Records	65
Product Info	Cycle No	8	Cycle Start Time	10:24:48 AM
Plant / Station	Cycle Run Date	16/06/2010	Cycle End Time	11:29:48 AM
Batch No	Fo/Fh Set Point	121.2 °C	Logger Sr No	1

Time Stamp	Ch. 00 °C	Ch. 01 °C	Ch. 02 °C	Ch. 03 °C	Ch. 04 °C	Ch. 05 °C	Ch. 06 °C	Ch. 07 °C	Ch. 08 °C	Ch. 09 °C	Ch. 10 °C	Ch. 11 °C	Ch. 12 °C	Ch. 13 °C	Ch. 14 °C	Ch. 15 °C	Average
10:25:48	43.2	41.2	40.5	40.5	44.5	40.8	43.7	42.7	0.0	0.0	0.0	0.0	0.0	0.0	0.0	0.0	42.1
10:26:48	45.2	44.1	43.4	43.4	46.1	44.0	45.6	45.2	0.0	0.0	0.0	0.0	0.0	0.0	0.0	0.0	44.6
10:27:48	49.4	48.0	47.5	47.4	50.1	48.4	49.6	48.8	0.0	0.0	0.0	0.0	0.0	0.0	0.0	0.0	48.7
10:28:48	54.3	52.9	52.5	52.5	54.6	53.6	54.3	53.2	0.0	0.0	0.0	0.0	0.0	0.0	0.0	0.0	53.5
10:29:48	57.4	56.5	56.3	56.2	57.3	57.1	56.7	56.4	0.0	0.0	0.0	0.0	0.0	0.0	0.0	0.0	56.7
10:30:48	59.3	58.7	58.8	58.7	58.9	59.3	58.4	58.5	0.0	0.0	0.0	0.0	0.0	0.0	0.0	0.0	58.8
10:31:48	60.3	60.2	60.3	60.3	60.0	60.7	59.5	59.7	0.0	0.0	0.0	0.0	0.0	0.0	0.0	0.0	60.1
10:32:48	61.0	61.0	61.2	61.3	60.6	61.5	60.1	60.5	0.0	0.0	0.0	0.0	0.0	0.0	0.0	0.0	60.9
10:33:48	61.3	61.5	61.7	61.8	60.9	61.9	60.5	61.0	0.0	0.0	0.0	0.0	0.0	0.0	0.0	0.0	61.3
10:34:48	61.5	61.7	61.9	62.1	61.1	62.1	60.6	61.2	0.0	0.0	0.0	0.0	0.0	0.0	0.0	0.0	61.5
10:35:48	62.0	62.1	62.3	62.4	61.7	62.5	61.2	61.7	0.0	0.0	0.0	0.0	0.0	0.0	0.0	0.0	62.0
10:36:48	66.1	65.5	65.5	65.6	66.0	66.2	65.4	65.2	0.0	0.0	0.0	0.0	0.0	0.0	0.0	0.0	65.7
10:37:48	73.7	72.4	72.3	72.5	73.6	73.9	72.8	72.0	0.0	0.0	0.0	0.0	0.0	0.0	0.0	0.0	72.9
10:38:48	83.5	81.8	82.0	82.0	83.2	84.0	82.5	80.8	0.0	0.0	0.0	0.0	0.0	0.0	0.0	0.0	82.5
10:39:48	94.6	92.6	92.9	93.1	94.1	95.4	93.2	91.2	0.0	0.0	0.0	0.0	0.0	0.0	0.0	0.0	93.4
10:40:48	106.1	104.2	104.8	104.9	104.9	107.6	104.3	102.1	0.0	0.0	0.0	0.0	0.0	0.0	0.0	0.0	104.9
10:41:48	116.1	114.6	115.5	115.9	114.4	118.4	114.0	111.9	0.0	0.0	0.0	0.0	0.0	0.0	0.0	0.0	115.1
10:42:48	123.8	123.3	124.4	124.9	121.9	127.3	121.5	119.8	0.0	0.0	0.0	0.0	0.0	0.0	0.0	0.0	123.4
10:43:48	129.7	129.7	131.0	131.6	127.3	133.3	127.0	125.9	0.0	0.0	0.0	0.0	0.0	0.0	0.0	0.0	129.4
10:44:48	133.3	134.2	135.2	136.1	130.9	137.5	130.6	130.1	0.0	0.0	0.0	0.0	0.0	0.0	0.0	0.0	133.5
10:45:48	135.4	136.7	137.8	138.6	132.9	139.5	132.5	132.8	0.0	0.0	0.0	0.0	0.0	0.0	0.0	0.0	135.8
10:46:48	135.8	137.5	138.5	139.3	133.4	139.7	133.1	133.8	0.0	0.0	0.0	0.0	0.0	0.0	0.0	0.0	136.4
10:47:48	135.3	137.0	138.0	138.8	132.9	139.0	132.5	133.6	0.0	0.0	0.0	0.0	0.0	0.0	0.0	0.0	135.9
10:48:48	134.2	136.0	136.9	137.7	132.0	137.6	131.6	132.9	0.0	0.0	0.0	0.0	0.0	0.0	0.0	0.0	134.9

Time Stamp	Ch. 00 °C	Ch. 01 °C	Ch. 02 °C	Ch. 03 °C	Ch. 04 °C	Ch. 05 °C	Ch. 06 °C	Ch. 07 °C	Ch. 08 °C	Ch. 09 °C	Ch. 10 °C	Ch. 11 °C	Ch. 12 °C	Ch.13 °C	Ch. 14 °C	Ch. 15 °C	Average
10:49:48	132.5	134.4	135.1	135.9	130.6	135.8	130.2	131.6	0.0	0.0	0.0	0.0	0.0	0.0	0.0	0.0	133.3
10:50:48	131.2	132.8	133.4	134.3	129.3	134.1	128.9	130.3	0.0	0.0	0.0	0.0	0.0	0.0	0.0	0.0	131.8
10:51:48	130.1	131.5	132.0	132.8	128.5	132.6	128.0	129.4	0.0	0.0	0.0	0.0	0.0	0.0	0.0	0.0	130.6
10:52:48	129.5	130.7	131.1	131.9	128.1	131.9	127.5	128.9	0.0	0.0	0.0	0.0	0.0	0.0	0.0	0.0	129.9
10:53:48	129.1	130.0	130.3	131.1	127.6	131.2	127.1	128.3	0.0	0.0	0.0	0.0	0.0	0.0	0.0	0.0	129.3
10:54:48	129.1	129.8	130.1	130.9	127.7	130.9	127.1	128.3	0.0	0.0	0.0	0.0	0.0	0.0	0.0	0.0	129.2
10:55:48	129.3	129.8	130.1	130.9	127.9	131.0	127.3	128.3	0.0	0.0	0.0	0.0	0.0	0.0	0.0	0.0	129.3
10:56:48	129.7	130.0	130.5	131.1	128.2	131.4	127.7	128.6	0.0	0.0	0.0	0.0	0.0	0.0	0.0	0.0	129.6
10:57:48	130.8	130.5	130.8	131.4	128.7	131.7	128.0	129.0	0.0	0.0	0.0	0.0	0.0	0.0	0.0	0.0	130.1
10:58:48	130.6	130.9	131.1	131.7	129.1	132.1	128.4	129.4	0.0	0.0	0.0	0.0	0.0	0.0	0.0	0.0	130.4
10:59:48	130.9	131.3	131.6	132.3	129.6	132.5	128.9	129.8	0.0	0.0	0.0	0.0	0.0	0.0	0.0	0.0	130.9
11:00:48	131.4	131.6	131.9	132.5	129.8	132.8	129.2	130.1	0.0	0.0	0.0	0.0	0.0	0.0	0.0	0.0	131.2
11:01:48	131.5	131.9	132.2	132.8	130.0	133.1	129.6	130.5	0.0	0.0	0.0	0.0	0.0	0.0	0.0	0.0	131.5
11:02:48	131.9	132.2	132.5	133.1	130.5	133.3	129.9	130.9	0.0	0.0	0.0	0.0	0.0	0.0	0.0	0.0	131.8
11:03:48	132.2	132.4	132.7	133.3	130.6	133.5	130.1	131.1	0.0	0.0	0.0	0.0	0.0	0.0	0.0	0.0	132.0
11:04:48	132.0	132.4	132.6	133.2	130.7	133.4	130.2	131.1	0.0	0.0	0.0	0.0	0.0	0.0	0.0	0.0	131.9
11:05:48	132.2	132.5	132.8	133.4	130.8	133.6	130.2	131.3	0.0	0.0	0.0	0.0	0.0	0.0	0.0	0.0	132.1
11:06:48	132.2	132.5	132.8	133.4	131.0	133.6	130.3	131.3	0.0	0.0	0.0	0.0	0.0	0.0	0.0	0.0	132.1
11:07:48	132.2	132.5	132.8	133.3	130.9	133.6	130.3	131.3	0.0	0.0	0.0	0.0	0.0	0.0	0.0	0.0	132.1
11:08:48	132.1	132.5	132.7	133.3	130.9	133.5	130.3	131.3	0.0	0.0	0.0	0.0	0.0	0.0	0.0	0.0	132.1
11:09:48	132.1	132.4	132.7	133.3	131.0	133.5	130.3	131.3	0.0	0.0	0.0	0.0	0.0	0.0	0.0	0.0	132.1
11:10:48	132.0	132.4	132.6	133.2	130.9	133.4	130.3	131.3	0.0	0.0	0.0	0.0	0.0	0.0	0.0	0.0	132.0
11:11:48	132.0	132.3	132.5	133.2	130.8	133.3	130.2	131.2	0.0	0.0	0.0	0.0	0.0	0.0	0.0	0.0	131.9
11:12:48	131.9	132.3	132.5	133.1	130.9	133.3	130.2	131.3	0.0	0.0	0.0	0.0	0.0	0.0	0.0	0.0	131.9
11:13:48	131.9	132.2	132.3	133.0	130.9	133.2	130.2	131.2	0.0	0.0	0.0	0.0	0.0	0.0	0.0	0.0	131.9
11:14:48	132.1	132.2	132.4	133.0	130.8	133.2	130.2	131.3	0.0	0.0	0.0	0.0	0.0	0.0	0.0	0.0	131.9
11:15:48	131.5	131.9	131.9	132.5	130.2	132.7	129.7	130.8	0.0	0.0	0.0	0.0	0.0	0.0	0.0	0.0	131.4
11:16:48	130.4	130.9	130.9	131.5	129.1	131.5	128.6	129.8	0.0	0.0	0.0	0.0	0.0	0.0	0.0	0.0	130.3
11:17:48	129.0	129.5	129.5	130.1	127.8	130.0	127.2	128.6	0.0	0.0	0.0	0.0	0.0	0.0	0.0	0.0	129.0
11:18:48	127.4	127.9	127.8	128.5	126.3	128.3	125.6	127.1	0.0	0.0	0.0	0.0	0.0	0.0	0.0	0.0	127.4
11:19:48	123.9	122.7	120.5	121.5	123.0	119.2	122.9	124.2	0.0	0.0	0.0	0.0	0.0	0.0	0.0	0.0	122.2
11:20:48	119.3	117.4	114.0	115.1	118.8	112.7	118.6	119.8	0.0	0.0	0.0	0.0	0.0	0.0	0.0	0.0	117.0
11:21:48	115.0	113.4	110.0	111.0	114.9	109.0	114.7	115.8	0.0	0.0	0.0	0.0	0.0	0.0	0.0	0.0	113.0
11:22:48	111.8	109.4	105.5	106.8	111.5	104.5	111.1	112.2	0.0	0.0	0.0	0.0	0.0	0.0	0.0	0.0	109.1
11:23:48	108.0	105.9	102.3	103.2	108.0	101.2	107.7	108.8	0.0	0.0	0.0	0.0	0.0	0.0	0.0	0.0	105.6

Time Stamp	Ch. 00 °C	Ch. 01 °C	Ch. 02 °C	Ch. 03 °C	Ch. 04 °C	Ch. 05 °C	Ch. 06 °C	Ch. 07 °C	Ch. 08 °C	Ch. 09 °C	Ch. 10 °C	Ch. 11 °C	Ch. 12 °C	Ch.13 °C	Ch. 14 °C	Ch. 15 °C	Average
11:24:48	104.9	102.5	98.9	100.1	104.9	98.1	104.4	105.4	0.0	0.0	0.0	0.0	0.0	0.0	0.0	0.0	102.4
11:25:48	82.4	77.7	70.9	74.9	84.7	72.9	85.1	87.9	0.0	0.0	0.0	0.0	0.0	0.0	0.0	0.0	79.6
11:26:48	70.2	66.4	60.7	64.4	73.8	62.8	72.7	74.8	0.0	0.0	0.0	0.0	0.0	0.0	0.0	0.0	68.2
11:27:48	63.0	60.5	55.6	58.6	66.4	57.6	65.0	66.8	0.0	0.0	0.0	0.0	0.0	0.0	0.0	0.0	61.7
11:28:48	57.7	56.2	52.4	54.5	61.5	53.0	59.9	61.3	0.0	0.0	0.0	0.0	0.0	0.0	0.0	0.0	57.1
11:29:48	52.5	52.5	48.8	50.5	56.5	49.4	54.6	56.2	0.0	0.0	0.0	0.0	0.0	0.0	0.0	0.0	52.6
Min	43.2	41.2	40.5	40.5	44.5	40.8	43.7	42.7	0.0	0.0	0.0	0.0	0.0	0.0	0.0	0.0	42.1
Max	135.8	137.5	138.5	139.3	133.4	139.7	133.1	133.8	0.0	0.0	0.0	0.0	0.0	0.0	0.0	0.0	136.4

Conducted by

Checked by

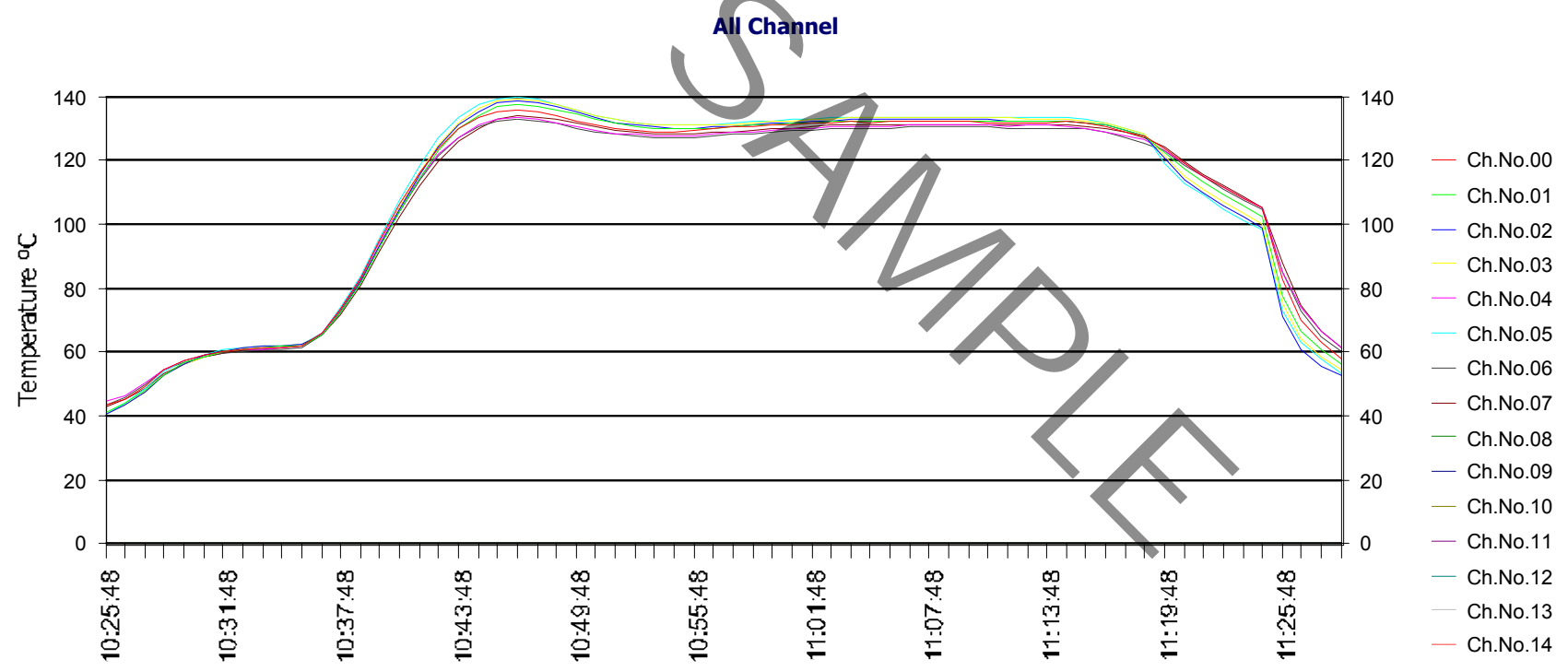
Approved by

SAMPLE

Organisation/Co.
Product Info.
Plant/Station No
Batch Info.
Operator ID 01234567
Cycle Run Date 16/06/2010

Fo/Fh Set Point 121.2 °C
Total Records 65
Cycle Start Time 10:24:48 AM
Cycle End Time 11:29:48 AM
Set Point

Close



CoSTER-100

Date: 29/06/2010 Time: 10:04:25 AM

Sterilization Validation Software Pharma-LOG 100 Leathality Report

Customer Name
Product Info
Plant / Station
Batch No

Operator ID **01234567**
Cycle No **8**
Cycle Run Date **16/06/2010**
Fo/Fh Set Point **121.2 °C**

Total Records **65**
Cycle Start Time **10:24:48 AM**
Cycle End Time **11:29:48 AM**
Logger Sr No **1**

Parameters computed during sterilization period	Ch. 00	Ch. 01	Ch. 02	Ch. 03	Ch. 04	Ch. 05	Ch. 06	Ch. 07	Ch. 08	Ch. 09	Ch. 10	Ch. 11	Ch. 12	Ch.13	Ch. 14	Ch. 15
10:25:48	0.00	0.00	0.00	0.00	0.00	0.00	0.00	0.00	0.00	0.00	0.00	0.00	0.00	0.00	0.00	0.00
10:26:48	0.00	0.00	0.00	0.00	0.00	0.00	0.00	0.00	0.00	0.00	0.00	0.00	0.00	0.00	0.00	0.00
10:27:48	0.00	0.00	0.00	0.00	0.00	0.00	0.00	0.00	0.00	0.00	0.00	0.00	0.00	0.00	0.00	0.00
10:28:48	0.00	0.00	0.00	0.00	0.00	0.00	0.00	0.00	0.00	0.00	0.00	0.00	0.00	0.00	0.00	0.00
10:29:48	0.00	0.00	0.00	0.00	0.00	0.00	0.00	0.00	0.00	0.00	0.00	0.00	0.00	0.00	0.00	0.00
10:30:48	0.00	0.00	0.00	0.00	0.00	0.00	0.00	0.00	0.00	0.00	0.00	0.00	0.00	0.00	0.00	0.00
10:31:48	0.00	0.00	0.00	0.00	0.00	0.00	0.00	0.00	0.00	0.00	0.00	0.00	0.00	0.00	0.00	0.00
10:32:48	0.00	0.00	0.00	0.00	0.00	0.00	0.00	0.00	0.00	0.00	0.00	0.00	0.00	0.00	0.00	0.00
10:33:48	0.00	0.00	0.00	0.00	0.00	0.00	0.00	0.00	0.00	0.00	0.00	0.00	0.00	0.00	0.00	0.00
10:34:48	0.00	0.00	0.00	0.00	0.00	0.00	0.00	0.00	0.00	0.00	0.00	0.00	0.00	0.00	0.00	0.00
10:35:48	0.00	0.00	0.00	0.00	0.00	0.00	0.00	0.00	0.00	0.00	0.00	0.00	0.00	0.00	0.00	0.00
10:36:48	0.00	0.00	0.00	0.00	0.00	0.00	0.00	0.00	0.00	0.00	0.00	0.00	0.00	0.00	0.00	0.00
10:37:48	0.00	0.00	0.00	0.00	0.00	0.00	0.00	0.00	0.00	0.00	0.00	0.00	0.00	0.00	0.00	0.00
10:38:48	0.00	0.00	0.00	0.00	0.00	0.00	0.00	0.00	0.00	0.00	0.00	0.00	0.00	0.00	0.00	0.00
10:39:48	0.00	0.00	0.00	0.00	0.00	0.00	0.00	0.00	0.00	0.00	0.00	0.00	0.00	0.00	0.00	0.00
10:40:48	0.00	0.00	0.00	0.00	0.00	0.00	0.00	0.00	0.00	0.00	0.00	0.00	0.00	0.00	0.00	0.00
10:41:48	0.00	0.00	0.00	0.00	0.00	0.00	0.00	0.00	0.00	0.00	0.00	0.00	0.00	0.00	0.00	0.00
10:42:48	1.91	1.70	2.19	2.45	1.23	4.27	1.12	0.00	0.00	0.00	0.00	0.00	0.00	0.00	0.00	0.00
10:43:48	7.41	7.41	10.00	11.48	4.27	16.98	3.98	3.09	0.00	0.00	0.00	0.00	0.00	0.00	0.00	0.00
10:44:48	16.98	20.89	26.30	32.36	9.77	44.67	9.12	8.13	0.00	0.00	0.00	0.00	0.00	0.00	0.00	0.00
10:45:48	27.54	37.15	47.86	57.54	15.49	70.79	14.13	15.14	0.00	0.00	0.00	0.00	0.00	0.00	0.00	0.00
10:46:48	30.20	44.67	56.23	67.61	17.38	74.13	16.22	19.05	0.00	0.00	0.00	0.00	0.00	0.00	0.00	0.00
10:47:48	26.92	39.81	50.12	60.26	15.49	63.10	14.13	18.20	0.00	0.00	0.00	0.00	0.00	0.00	0.00	0.00
10:48:48	20.89	31.62	38.90	46.77	12.59	45.71	11.48	15.49	0.00	0.00	0.00	0.00	0.00	0.00	0.00	0.00

Parameters computed during sterilization period	Ch. 00	Ch. 01	Ch. 02	Ch. 03	Ch. 04	Ch. 05	Ch. 06	Ch. 07	Ch. 08	Ch. 09	Ch. 10	Ch. 11	Ch. 12	Ch.13	Ch. 14	Ch. 15
10:49:48	14.13	21.88	25.70	30.90	9.12	30.20	8.32	11.48	0.00	0.00	0.00	0.00	0.00	0.00	0.00	0.00
10:50:48	10.47	15.14	17.38	21.38	6.76	20.42	6.17	8.51	0.00	0.00	0.00	0.00	0.00	0.00	0.00	0.00
10:51:48	8.13	11.22	12.59	15.14	5.62	14.45	5.01	6.92	0.00	0.00	0.00	0.00	0.00	0.00	0.00	0.00
10:52:48	7.08	9.33	10.23	12.30	5.13	12.30	4.47	6.17	0.00	0.00	0.00	0.00	0.00	0.00	0.00	0.00
10:53:48	6.46	7.94	8.51	10.23	4.57	10.47	4.07	5.37	0.00	0.00	0.00	0.00	0.00	0.00	0.00	0.00
10:54:48	6.46	7.59	8.13	9.77	4.68	9.77	4.07	5.37	0.00	0.00	0.00	0.00	0.00	0.00	0.00	0.00
10:55:48	6.76	7.59	8.13	9.77	4.90	10.00	4.27	5.37	0.00	0.00	0.00	0.00	0.00	0.00	0.00	0.00
10:56:48	7.41	7.94	8.91	10.23	5.25	10.96	4.68	5.75	0.00	0.00	0.00	0.00	0.00	0.00	0.00	0.00
10:57:48	9.55	8.91	9.55	10.96	5.89	11.75	5.01	6.31	0.00	0.00	0.00	0.00	0.00	0.00	0.00	0.00
10:58:48	9.12	9.77	10.23	11.75	6.46	12.88	5.50	6.92	0.00	0.00	0.00	0.00	0.00	0.00	0.00	0.00
10:59:48	9.77	10.72	11.48	13.49	7.24	14.13	6.17	7.59	0.00	0.00	0.00	0.00	0.00	0.00	0.00	0.00
11:00:48	10.96	11.48	12.30	14.13	7.59	15.14	6.61	8.13	0.00	0.00	0.00	0.00	0.00	0.00	0.00	0.00
11:01:48	11.22	12.30	13.18	15.14	7.94	16.22	7.24	8.91	0.00	0.00	0.00	0.00	0.00	0.00	0.00	0.00
11:02:48	12.30	13.18	14.13	16.22	8.91	16.98	7.76	9.77	0.00	0.00	0.00	0.00	0.00	0.00	0.00	0.00
11:03:48	13.18	13.80	14.79	16.98	9.12	17.78	8.13	10.23	0.00	0.00	0.00	0.00	0.00	0.00	0.00	0.00
11:04:48	12.59	13.80	14.45	16.60	9.33	17.38	8.32	10.23	0.00	0.00	0.00	0.00	0.00	0.00	0.00	0.00
11:05:48	13.18	14.13	15.14	17.38	9.55	18.20	8.32	10.72	0.00	0.00	0.00	0.00	0.00	0.00	0.00	0.00
11:06:48	13.18	14.13	15.14	17.38	10.00	18.20	8.51	10.72	0.00	0.00	0.00	0.00	0.00	0.00	0.00	0.00
11:07:48	13.18	14.13	15.14	16.98	9.77	18.20	8.51	10.72	0.00	0.00	0.00	0.00	0.00	0.00	0.00	0.00
11:08:48	12.88	14.13	14.79	16.98	9.77	17.78	8.51	10.72	0.00	0.00	0.00	0.00	0.00	0.00	0.00	0.00
11:09:48	12.88	13.80	14.79	16.98	10.00	17.78	8.51	10.72	0.00	0.00	0.00	0.00	0.00	0.00	0.00	0.00
11:10:48	12.59	13.80	14.45	16.60	9.77	17.38	8.51	10.72	0.00	0.00	0.00	0.00	0.00	0.00	0.00	0.00
11:11:48	12.59	13.49	14.13	16.60	9.55	16.98	8.32	10.47	0.00	0.00	0.00	0.00	0.00	0.00	0.00	0.00
11:12:48	12.30	13.49	14.13	16.22	9.77	16.98	8.32	10.72	0.00	0.00	0.00	0.00	0.00	0.00	0.00	0.00
11:13:48	12.30	13.18	13.49	15.85	9.77	16.60	8.32	10.47	0.00	0.00	0.00	0.00	0.00	0.00	0.00	0.00
11:14:48	12.88	13.18	13.80	15.85	9.55	16.60	8.32	10.72	0.00	0.00	0.00	0.00	0.00	0.00	0.00	0.00
11:15:48	11.22	12.30	12.30	14.13	8.32	14.79	7.41	9.55	0.00	0.00	0.00	0.00	0.00	0.00	0.00	0.00
11:16:48	8.71	9.77	9.77	11.22	6.46	11.22	5.75	7.59	0.00	0.00	0.00	0.00	0.00	0.00	0.00	0.00
11:17:48	6.31	7.08	7.08	8.13	4.79	7.94	4.17	5.75	0.00	0.00	0.00	0.00	0.00	0.00	0.00	0.00
11:18:48	4.37	4.90	4.79	5.62	3.39	5.37	2.88	4.07	0.00	0.00	0.00	0.00	0.00	0.00	0.00	0.00
11:19:48	1.95	1.48	0.00	1.12	1.58	0.00	1.55	2.09	0.00	0.00	0.00	0.00	0.00	0.00	0.00	0.00
11:20:48	0.00	0.00	0.00	0.00	0.00	0.00	0.00	0.00	0.00	0.00	0.00	0.00	0.00	0.00	0.00	0.00
11:21:48	0.00	0.00	0.00	0.00	0.00	0.00	0.00	0.00	0.00	0.00	0.00	0.00	0.00	0.00	0.00	0.00
11:22:48	0.00	0.00	0.00	0.00	0.00	0.00	0.00	0.00	0.00	0.00	0.00	0.00	0.00	0.00	0.00	0.00

Parameters computed during sterilization period	Ch. 00	Ch. 01	Ch. 02	Ch. 03	Ch. 04	Ch. 05	Ch. 06	Ch. 07	Ch. 08	Ch. 09	Ch. 10	Ch. 11	Ch. 12	Ch.13	Ch. 14	Ch. 15
11:23:48	0.00	0.00	0.00	0.00	0.00	0.00	0.00	0.00	0.00	0.00	0.00	0.00	0.00	0.00	0.00	0.00
11:24:48	0.00	0.00	0.00	0.00	0.00	0.00	0.00	0.00	0.00	0.00	0.00	0.00	0.00	0.00	0.00	0.00
11:25:48	0.00	0.00	0.00	0.00	0.00	0.00	0.00	0.00	0.00	0.00	0.00	0.00	0.00	0.00	0.00	0.00
11:26:48	0.00	0.00	0.00	0.00	0.00	0.00	0.00	0.00	0.00	0.00	0.00	0.00	0.00	0.00	0.00	0.00
11:27:48	0.00	0.00	0.00	0.00	0.00	0.00	0.00	0.00	0.00	0.00	0.00	0.00	0.00	0.00	0.00	0.00
11:28:48	0.00	0.00	0.00	0.00	0.00	0.00	0.00	0.00	0.00	0.00	0.00	0.00	0.00	0.00	0.00	0.00
11:29:48	0.00	0.00	0.00	0.00	0.00	0.00	0.00	0.00	0.00	0.00	0.00	0.00	0.00	0.00	0.00	0.00

Conducted by

Checked by

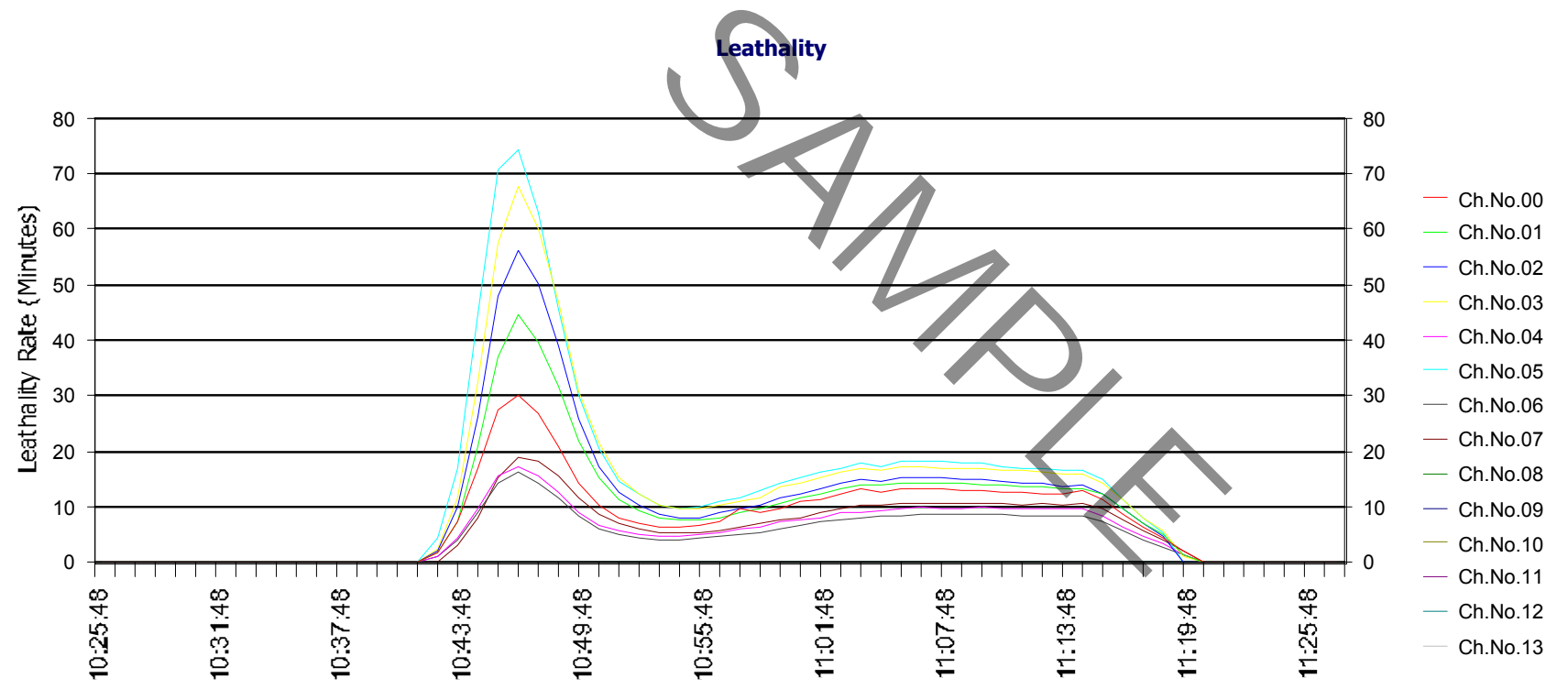
Approved by

SAMPLE

Organisation/Co.
Product Info.
Plant/Station No
Batch Info.
Operator ID 01234567
Cycle Run Date 16/06/2010

Fo/Fh Set Point 121.2 °C
Total Records 65
Cycle Start Time 10:24:48 AM
Cycle End Time 11:29:48 AM
Set Point

Close



CoSTER-100

Date: 29/06/2010 Time: 10:06:15 AM

Sterilization Validation Software Pharma-LOG 100 Summary Report

Customer Name
Product Info
Plant / Station
Batch No

Operator ID **01234567**
Cycle No **8**
Cycle Run Date **16/06/2010**
Fo/Fh Set Point **121.2 °C**
Min Temperature **121.5 °C**

Total Records **65**
Cycle Start Time **10:24:48 AM**
Cycle End Time **11:29:48 AM**
Logger Sr No **1**
Max Temperature **139.7 °C**

Parameters computed during sterilization period	Ch. 00	Ch. 01	Ch. 02	Ch. 03	Ch. 04	Ch. 05	Ch. 06	Ch. 07	Ch. 08	Ch. 09	Ch. 10	Ch. 11	Ch. 12	Ch.13	Ch. 14	Ch. 15
AverageTemp(°C)	0	0	0	0	0	0	0	0	0	0	0	0	0	0	0	0
MinimumTemp(°C)	123.8	122.7	124.4	121.5	121.9	127.3	121.5	124.2	0	0	0	0	0	0	0	0
MaximumTemp(°C)	135.8	137.5	138.5	139.3	133.4	139.7	133.1	133.8	0	0	0	0	0	0	0	0
Std.Dev.	0	0	0	0	0	0	0	0	0	0	0	0	0	0	0	0
Fo/Fh	448.0	538.8	610.2	720.5	306.8	774.5	271.9	337.9	0	0	0	0	0	0	0	0
Fo/Fh Start Time	10:42:48	10:42:48	10:42:48	10:42:48	10:42:48	10:42:48	10:42:48	10:43:48								
Fo/Fh End Time	11:19:48	11:19:48	11:18:48	11:19:48	11:19:48	11:18:48	11:19:48	11:19:48								

Conducted by

Checked by

Approved by